

Deaf and Dumb Translation Using Hand Gestures

Arjun Bapusaheb Pawar¹, Gautam Ved², Muzammil Shaikh³, Uday Kumar Singh⁴

^{1,2,3}Student of Information Technology Department, KC College of Engineering, Thane, Maharashtra, India

⁴Faulty of Information Technology Department, KC College of Engineering, Thane, Maharashtra, India

Abstract— Sign language is wide employed by people with handicap to speak with one another handily exploitation hand gestures. However, non-sign-language speakers notice it extremely onerous to speak with those with speech or handicap since it interpreters don't seem to be promptly on the market the tiniest quantity bit times. several countries have their own language, like English language (ASL) that is significantly used inside the u. s. and so the blabber mouthed a vicinity of North American country. The planned system helps non-sign-language speakers in recognising gestures utilized in Indian language. The system represented throughout this paper is enforced exploitation PYTHON & OPENCV. throughout this approach, firstly, the signs unit of mensuration captured employing a camera. photos|the pictures|the photographs} captured unit of mensuration then processed any and so the alternatives unit of mensuration extracted from the captured pictures from the information. this method can modify non-sign-language speakers to higher perceive and communicate with those with impaired hearing.

Keywords — Hand gesture recognition, Image processing techniques.

I. INTRODUCTION

Hand gesture may be a method of communication between dumb and deaf people. ancient people cannot communicate to dumb people. they need to be told linguistic communication. at the instant they convey to deaf people further fluently. to vary the life quite dumb people, this project is developed. Sign language utilize every physical and non physical communication. Hand gestures area unit physical movement by victimization hand. Dumb people can categorical their felling with wholly totally different hand shapes. Each gesture has which means portion to that.

A gesture square measure usually made public options a physical movement of the hands, arms, face and body with the intent to convey knowledge or which means. Gesture primarily based interaction work as a communication tool for people with psychological feature or physical disabilities.

Hand gestures system is wide used technology for serving to the deaf and dumb people Dumb people can categorical their felling with wholly totally different hand shapes. Each gesture has which means portion to that.

Image Processing

Image method may well be a technique to convert an image into digital kind and perform some operations on that, thus on induce Associate in Nursing inflated image or to extract some helpful data from it. it's a kind of signal dispensation throughout that input is image, like video frame or photograph and output is in addition image or characteristics related to that image. usually Image technique system includes treating photos as 2 dimensional signals whereas applying already set signal technique ways in which to them.

It is among speedily growing technologies currently, with its applications in varied aspects of a business. Image technique forms core analysis house among engineering and technology disciplines too.

Image technique primarily includes the subsequent 3 steps.

1. Importing the image with optical scanner or by digital photography.
2. Analyzing and manipulating the image that has knowledge compression and image sweetening and recognizing patterns that aren't to human eyes like satellite photos.
3. Output is that the last stage throughout that result's altered image or report that's supported image analysis.

II. LITERATURE REVIEW

In paper [1], This paper aims to hide the assorted prevailing strategies of deaf-mute communication interpreter system. the 2 broad classification of the communication methodologies employed by the deaf –mute folks ar - wearable Communication Device and on-line Learning System. below wearable communication methodology, there ar Glove based mostly system, data input device methodology and Handicom Touch-screen. All the on top of mentioned 3 sub-divided strategies build use of varied sensors, measuring device, an appropriate micro-controller, a text to speech conversion module, a data input device and a touch-screen. the requirement for associate degree external device to interpret the message between a deaf –mute and non-deaf-mute folks may be overcome by the second methodology i.e on-line learning system. the web Learning System has totally different strategies. The 5 divided strategies are- SLIM module, TESSA, Wi-See Technology, SWI_PELLE System and Web-Sign Technology.

In paper [2], Authors conferred the static hand gesture recognition system victimization digital image process. For hand gesture feature vector SIFT formula is employed. The SIFT options are computed at the sides that square measure invariant to scaling, rotation, addition of noise.

In paper [3], in their study, Authors given varied technique of hand gesture and language recognition planned within the past by varied researchers. For deaf and dumb folks, language is that the solely means of communication. With the assistance of language, these physical impaired folks categorical their emotions and thoughts to alternative person.

In paper [4], In this paper authors conferred a theme employing a database driven hand gesture recognition based mostly upon color model approach and thresholding approach at the side of an efficient example matching with will be effectively used for human artificial intelligence applications and similar different applications.. Initially, hand region is metameric by applying color model in YCbCr color house. within the next stage thresholding is applied to separate foreground and background. Finally, example based mostly matching technique is developed exploitation Principal part Analysis (PCA) for recognition.

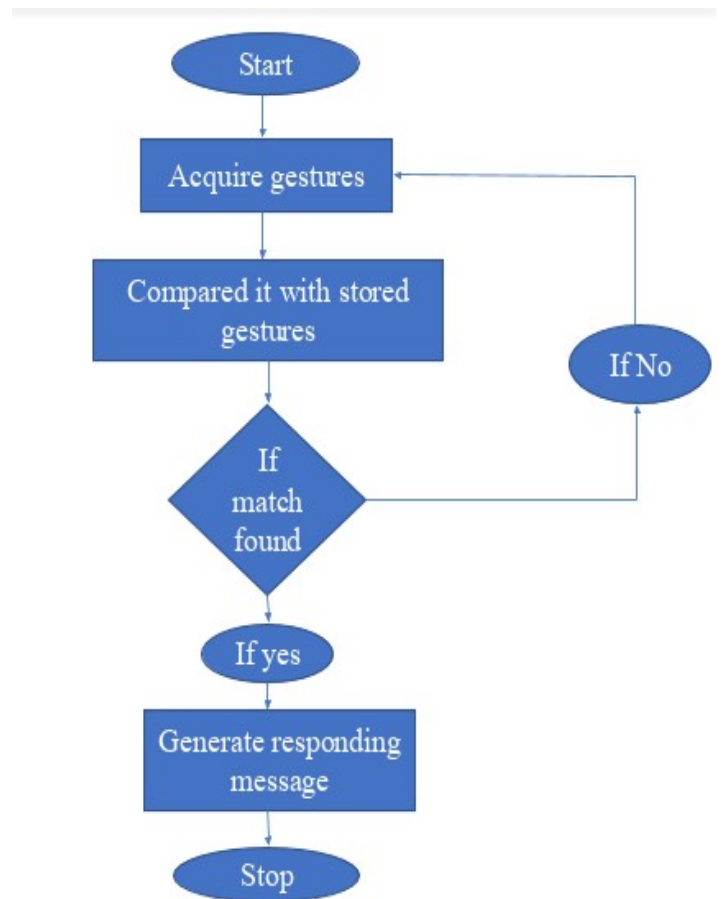
In paper [5] In this paper author planned a system to assist communication of deaf and dumb individuals communication victimisation Indian signing (ISL) with traditional individuals wherever hand gestures are going to be regenerate into acceptable text message. Main objective is to style AN algorithmic rule to convert dynamic gesture to text at real time. Finally when testing is finished the system are going to be enforced on golem platform and can be obtainable as AN application for sensible phone and pill computer. Basically, they tried to use the supervised Learning mechanism to the device on the premise of their main aim of.

III. PROPOSED SYSTEM

In this system, image is captured through internet cam implemented in offline mode and to boot in real ti era. Here 10dency to|we tend to} tend to require ten combination of sign hold on in work and testing of data base. the system isme mode. Input pictures unit of measurement applied to image pre method and segmentation.

In which, object and background is separated. Resultant image has shown some choices. Then feature extraction and recognition was done by exploitation Python and Opencv. Finally, this result's converted into text and voice.

IV. DIAGRAM



V. CONCLUSION

This paper deals with the assorted algorithm and techniques used for recognizing the hand gesture. Hand gesture recognition system is taken into consideration because the approach for added intuitive and expert human laptop interaction tool. The vary of applications includes virtual prototyping, language analysis and medical employment. language is one in all the tool of communication for physically impaired, deaf and dumb of us. From the on prime of thought it's clear that the vision primarily based hand gesture recognition has created outstanding progress among the sector of hand gesture recognition. code tools that unit used for implementing the gesture recognition system unit Opencv and Python language.

REFERENCES

- [1]. Sunitha K. A, Anitha Saraswathi.P, Aarthi.M, Jayapriya. K, Lingam Sunny, "Deaf Mute Communication Interpreter- A Review", International Journal of Applied Engineering Research ,Volume 11, pp 290-296 , 2016.
- [2]. Ashish Sethi, Hemanth ,Kuldeep Kumar,Bhaskara Rao ,Krishnan R, "Sign Pro-An Application Suite for Deaf and Dumb", IJCSET , Volume 2, Issue 5, pp-1203-1206, May 2012.

- [3]. Nasser H. Dardas and Nicolas D. Georganas, "Real-Time Hand Gesture Detection and Recognition Using Bag-of-Features and Support Vector Machine Techniques," IEEE Transaction on Instrumentation and Measurement, volume 60, no. 11, pp.132-137 November 2011.
- [4]. Priyanka Mekala, et.al , Asad Davari"Real-time Sign Language Recognition based on Neural Network Architecture" 978-1-4244-9592-4/11/ ©2011IEEE.
- [5]. <https://www.ijtrs.com/>